



[SUBSCRIBE](#)

[FORWARD](#)

[ABOUT](#)

[BECOME A MEMBER](#)

Kia ora tātou,

Praying for mental health, in our troubled New Zealand society

Every Monday night, between 8.00 pm and 9.00 pm, many people connected with NZCN join on-line with others in Pray As One NZ. This is a wonderful opportunity to pray together with fellow Christian believers from all over New Zealand, from all sorts of churches and backgrounds. If you haven't come on to PrayAsOne already, we warmly invite you to do so. [This is the link.](#)

Each week Pray As One has a focus on a different topic.

Last Monday's topic was mental health. In our fallen, flawed humanity, no one is immune to mental health struggles. Underlying predispositions, rejection, loneliness, loss, life crises, fractured relationships, addictions, stress, anxiety, moral confusion, and the lessening of Christian faith or hope – any of those (and many other things) could be risk factors.

Some of the prayer points mentioned on Pray As One this week were along these lines. You might like to pray them too.

We pray...

- For those who feel desperate, and without hope
- For the healing of inner brokenness
- For those who are considering suicide
- For those who live with someone else with mental health issues
- For frontline workers and counsellors in the mental health field, for great wisdom, and their own wellbeing
- For Christians to impart comfort and hope in a loving, sensitive way

- For churches to be places of acceptance and love
- For the Holy Spirit to speak grace, truth and hope into many lives
- For the Lord to bring a new wave of hope sweeping over the young people of New Zealand, through a great spiritual work bringing many to life and wholeness in Jesus.

Mā te Atua koutou e tiaki e manaaki i ngā wa katoa

May the Lord bless and keep you at all times



Dr Stuart Lange

National Director



Gayann Phillips

General Manager

and the NZCN team



Next up...



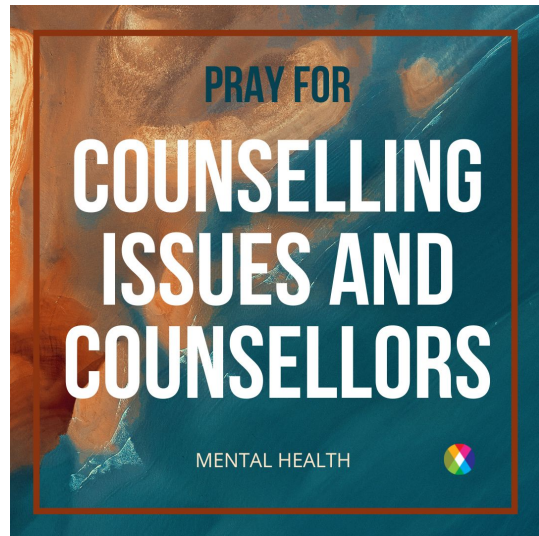
FAITH IS AN ADVENTURE. Are you equipped for yours?

SOUL EDGE.
LEADERSHIP TRAINING

Originally from the UK, Seb Gray moved to Christchurch two years ago to launch an intensive Christian discipleship gap year program called [Soul Edge](#) and a men's ministry called the [Xtreme Character Challenge](#).

SOUL EDGE runs leadership training programmes in Canada and New Zealand. Equipping young men & women to rise up as a generation of Christian leaders capable and passionate about the global church & bringing change to the world around them.

Click here to join us on Zoom, 8-9pm Mondays



Pray As One NZ

Every Monday night, from 8–9pm, we run a national prayer meeting on Zoom with 70–80 participants joining from throughout the nation. [Come join us!](#)



Directory of members

Helping to build awareness of different parachurch organisations serving the church in New Zealand and overseas.

NZCN featured member

Listed on our [Directory](#) by our Church and Christian Organisation members



Among other things, OAC offers training for community chaplains. Keep an eye out for the next training opportunity in the upcoming events.

[Visit the website](#)

[Listing on NZCN](#)



Job Board / Situations Vacant

Connecting people for employment, internships, or voluntary roles in Christian organisations and churches. This can include looking for people to join governance boards or to fill a need for a specific skill/project.

Employment Opportunities

Listed on our [Job Board](#) by our Church and Christian Organisation members

Denotes a new or recently re-listed opportunity



Scripture Union NZ

Fundraising Manager

– Wellington, full-time



Tertiary Students Christian Fellowship

Communications Manager

– location flexible, part/full-time

Finance Assistant

– Wellington, part-time

Office Administrator

- Wellington, part-time

Staff Workers

- locations nationwide, part/full-time



MiCamp Trust

Camp Chef/Cook

- Taupo, full-time

Grounds/Maintenance & Instructor

- Whakamaru, full-time

Lead Activity Instructor/camp worker

- Taupo, full-time



Sanitarium Health Food Company

full-time opportunities in Auckland unless noted

Assistant Demand Planner - full-time

Key Account Manager - full-time



Beth-Shean Trust

Auckland

Manager - full-time



Christians against Poverty New Zealand

Penrose, Auckland

Supporter Engagement Coordinator - part/full-time

Communications Project Lead - full-time



Christian Community Churches of New Zealand

Palmerston North

National Administrator - full-time (40 hours)

Executive Assistant - full-time (32 hours)



Africa Inland Mission

Onehunga, Auckland

Office Manager - part-time



mainly music NZ Trust
Auckland region

[Session Facilitator](#) - part-time



Whangaparaoa Baptist Church
Whangaparaoa, Auckland

[Pastor – General](#) - full/part-time



**MAXIM
INSTITUTE**

Maxim Institute
Hillsborough, Auckland

[Events and Operations Coordinator – Maternity
Cover](#) - temporary and part-time (24 hrs/week)



Event Calendar

Numbers in brackets indicate the number of events currently listed in that category until the *end of September*. Some events have both online and in person options to attend.

Attend in person (10)

Attend online (12)

the Arts

Camp/Hikoi (1)

Community

Denominational

Equip (7)

Fundraising

Outreach

Prayer (12)

Listed on our [Calendar](#) by our Church and Christian Organisation members. In chronological order with **listings added this week highlighted**.



Community Chaplains Training

[New Plymouth](#) – 30 July

[Bay of Plenty](#) – 13 August

[Auckland](#) – 10 September

If you're passionate about building connections and creating real change in people's lives, particularly assisting them on their spiritual journey, this may be just the opportunity you've been looking for.



TSCF Auckland Supporter Prayer

9 August, 12:15-12:45pm

Repeats on 2nd Tuesday of every month

in-person AND online



Teens Camp – MiCamp Taupo

19-21 August

This will be a great weekend to hang out with your mates, eat some good kai, play some epic games and learn about God and worship Him too. So grab some friends and come join us, we look forward to seeing you there!



School of Evangelism Foundational Course

2-3, 9-10, & 16-17 July in Christchurch

OAC presents the School of Evangelism Foundational Course, run over 3 weekends (Fri 7-9.30pm and Sat 9 am -5.30pm).

The course comprises three modules – Personal Evangelism, Outdoor Evangelism and Reaching Kids and Families. You can do all three modules or choose to do one.

You will learn the theory, in an interactive class, and then practice your evangelism techniques in context.



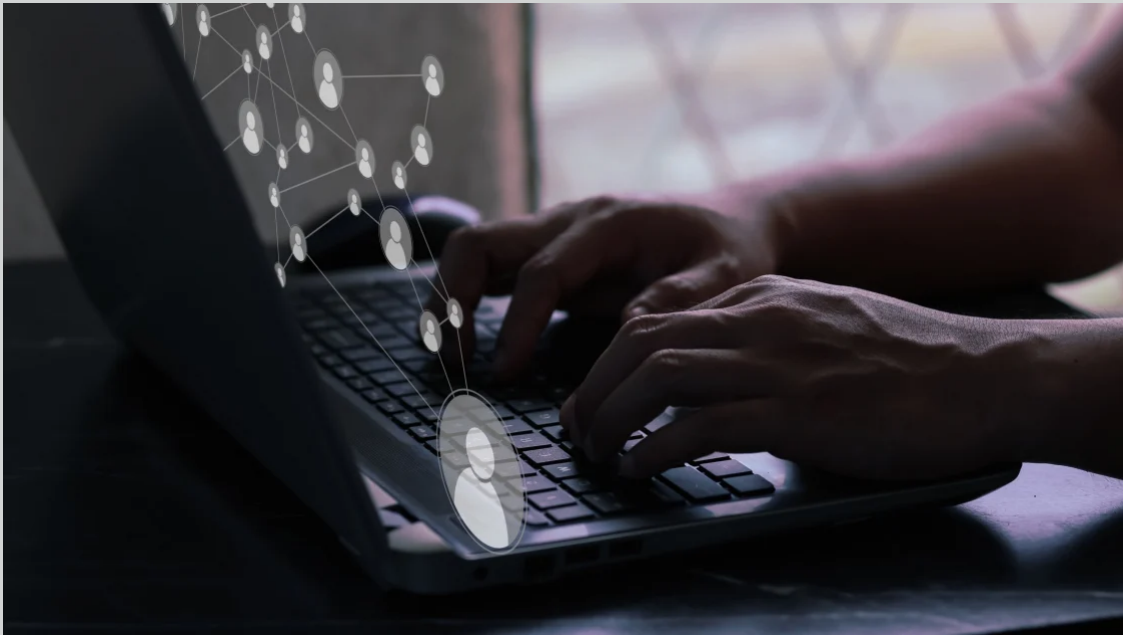
Children's Ministry Block Course

19-23 July in Auckland

How does your faith community view children and their place within the church? What do you believe about the faith formation of children, and the role of

parents and the wider faith community in this? How does that inform your practice? If you love helping our tamariki encounter the love of Jesus, then this one-week block course is for you.

Would you like to have your organisation featured in our newsletter, post employment opportunities on our job board, or list events on our calendar?



You can! These are benefits we make available to Christian organisations and churches with current membership

[Click here to learn more](#)



How often do you want to hear from us?

☐ Weekly, even if it's just notices. I like to know what's going on.

☐ Only when there is a message i.e. an editorial or article(s).

Help spread the news...

New Zealand society is in a period of significant change, much of it away from the Christian faith and values. Christian voices in society are either ignored or scorned.

We need Christian voices which are positive, sensible, reasoned, well-informed, and clear.

Forward to a friend



NZ Christian Network

PO Box 16004, Sandringham, Auckland 1351

You received this email because you signed up on our website or made a purchase from us.

[Unsubscribe](#)

[SUBSCRIBE](#)

[FORWARD](#)

[ABOUT](#)

[BECOME A MEMBER](#)