

## Meri Kirihimete me te Hape Nū Ia!



**Kia ora tātou,**

### **Christmas and Christians, Congress, summer closedown**

#### **Christmas and Christians**

As Christians, we need to work hard to keep Christ central to Christmas. Our modern secularised society primarily sees Christmas as a special festive family get-together, with lots of food and drink, and as the start of the summer holiday season. Such a cultural tradition has its place, for sure, despite the pressures of getting everything ready.

For many people, the baby Jesus is at least faintly in the mix. But the true story of Christ's incarnation has been generally eclipsed by the commercially-driven modern myth of Santa, flying reindeers, and loads of presents coming down every chimney (notwithstanding the distant thread of connection with a fourth century Christian bishop). And likewise overshadowed by other elements that make up a typical Kiwi Christmas.

However society at large may choose to celebrate Christmas, let us as Christian believers make Christ central, and be moved again in wonder that the infinite Creator and Lord of the universe has in his Son taken flesh and become God-with-us, to reveal more fully the love and truth of God, and to die and rise for our salvation.

#### **New Zealand Christian Leaders Congress**

We have received many highly positive responses to the news that next year, 19–21 September, NZCN will be hosting the 9<sup>th</sup> New Zealand Christian Leaders Congress. Many people sense that the time is right for Christian leaders to gather together, to hear from one another, and above to listen to what God is

telling us. Read all about it here: [What will it be like having 200+ New Zealand Christian leaders gathering together in the same room?](#) Please (1) block out your diary for those dates (2) Keep letting us know about topics and speakers (and seminars) that you feel would be great for us to have (3) Remember this event in prayer.

### **NZCN's Christmas and summer holiday close-down**

The convenience of having an online membership with NZCN means that our church and Christian organisation members are still able to post new listings on our website. So, even though we won't be sending out newsletters over the next six weeks, you can always check the website for new [opportunities](#) and to see [what's going on](#).

Please send an email to [connect@nzchristiannetwork.org.nz](mailto:connect@nzchristiannetwork.org.nz) if you need to get in touch and we will get back to you when we are able.

We wish you **Meri Kirihimete me te Hape Nū Ia!**

**Mā te Atua koutou e tiaki e manaaki i ngā wa katoa**

*May the Lord bless and keep you at all times*



**Dr Stuart Lange**

*National Director*



**Gayann Phillips**

*General Manager*

and the NZCN team

**SUBSCRIBE**

**FORWARD**

**ABOUT**

**BECOME A MEMBER**



### **BECOME AN ACTUAL MEMBER OF NZCN**

Individuals, couples, churches, and Christian organisations may all officially join NZCN. Becoming a member carries some benefits (see [here](#)), but is primarily about making a statement that you are firmly committed to biblical Christianity and to working together with other Christians.

**Not sure if you're already a member?** [Click here](#) and if you can't log onto the site, chances are you aren't currently a member. You might have a customer account to manage purchases, but members can watch Te Rongopai online.

# Pray As One NZ is the prayer arm of the New Zealand Christian Network



## Pray As One NZ

Every Monday night, from 8-9pm, we run a national prayer meeting on Zoom with 70-80 participants joining from throughout the nation. [Come join us!](#)



## Directory of members

Helping to build awareness of different parachurch organisations serving the church in New Zealand and overseas.

## Featured Member

Listed on our [Directory](#) by our Church and Christian Organisation members



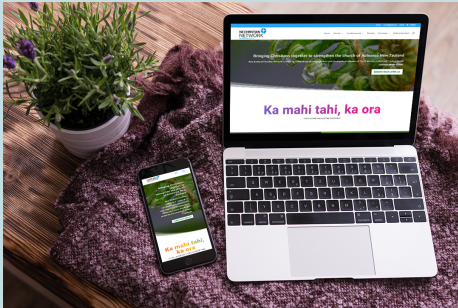
**cbm's** vision is for an inclusive world in which all people with disabilities are

given the opportunity to enjoy their human rights and achieve their full potential.

**cbm** aspires to follow the teachings and example of Jesus as stated in Luke 10:27 in His command "You shall love the Lord your God with all your heart and with all your soul and with all your strength and with all your mind, and your neighbour as yourself."

[cbm website](#)

[profile on NZCN](#)



New opportunities and events will continue to be posted on the website.

It might take a day or two for them to post ... but remember to check it out if you're looking for something!



## Job Board / Situations Vacant

Connecting people for employment, internships, or voluntary roles in Christian organisations and churches. This can include looking for people to join governance boards or to fill a need for a specific skill/project.

## Employment Opportunities

Listed on our [Job Board](#) by our Church and Christian Organisation members

**\*Denotes a new or recently re-listed opportunity\***



**St Margaret's Church**  
Hillsborough, Auckland

**\*Child and Family Leader\*** – part-time



### **Wainui Beach Vineyard Church**

Gisborne

**\*Senior Leader\*** - full-time



### **Manna Christian Stores**

Manukau, Auckland

**\*Customer Service Representative\***  
- full-time



### **Christians Against Poverty New Zealand**

Penrose, Auckland

**\*New Clients Team Leader\*** - full-time

**\*Fundraising Campaigns Lead\*** - full-time

**\*New Clients Coordinator\*** - full-time

**\*Key Relationship Lead\*** - full-time

**Head of Gospel Engagement** - full/part-time

**Grants Writer** - part-time



### **Elevate Christian Disability Trust**

Auckland

**\*Finance Administrator\*** - part-time



### **Christian Community Churches of New Zealand**

Palmerston North

**\*National Administrator\*** - full-time

**\*Events & Promotions Manager\*** - 32-40 hrs/wk

**\*Executive Assistant\*** - 32 hrs/wk



### **Christian Blind Mission International NZ**

contract

**Programmes Advisor** - Primary base is in Albany, Auckland, with travel to Papua New Guinea



### **Tertiary Students Christian Fellowship**

all either part/full-time

**Communications Manager** - flexible location

[Personal Assistant to the National Director](#) -

Wellington

[Wellington Team Leader](#) - Wellington

[Staff Workers](#) - Auckland, Wellington, Dunedin and across the nation



**Africa Inland Mission International New Zealand**  
*part-time*

[Office Manager](#) - Onehunga, Auckland



**Cromwell and Districts Presbyterian Church**  
Cromwell

[Full-time Ministry Position](#)



**Bethlehem Community Church**  
Tauranga

[Full Time Minister](#)



**Baptist Churches of New Zealand**  
Penrose, Auckland

[Youth Catalyst](#)



**Alpha NZ**  
*All positions flexible as part/full-time*

[Regional Coach – Otago & Southland](#)

[Regional Coach – Wellington & Surrounds](#)



## Event Calendar

**Numbers in brackets indicate the number of events currently listed in that category until the *end of November*.**  
Some events have both online and in person options to attend.

## Events

Listed on our [Calendar](#) by our Church and Christian Organisation members. In chronological order with **listings added this week highlighted**.



### [Laidlaw College](#)

Applications for these programmes close on 27 Jan 2023.

Semester One begins on 20 Feb 2023.

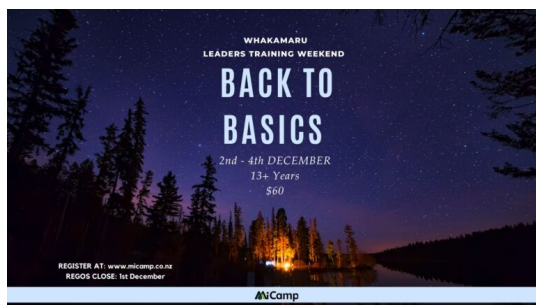
With programmes ranging from Certificate to Doctoral level, we offer flexible pathways for full-time or part-time learning to equip you for lifelong faithfulness and leadership in any vocation. We also have a range of block courses, feature courses, and night classes on offer, including professional development for pastoral and ministry leaders.



### [Carey Baptist College](#)

Applications for 2023 are open ☐

Whether it's a Bachelor's degree, a Diploma, or a Certificate, come and learn, grow, and be transformed for Jesus and his ministry in the world.



### [MiCamp Leaders Training Weekend](#)

2 December – MiCamp Whakamaru

If you are interested in expanding your leadership influence in your community, church or during our school holiday camps then this camp is for you.

Our Leadership camps are filled with general leadership training along with more pin-pointed training towards our holiday camp leaders, so there is something there for everyone. Our aim is to see youth & young adults step into their God-given leadership potential and be better equipped to serve God in leadership roles.



### [VENN Summer Conference 2023](#)

6-13 January – Cambridge

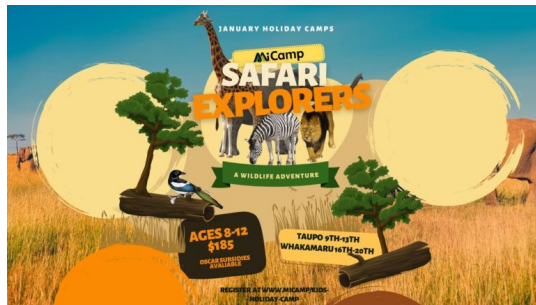
Join 100 students, young professionals, and creatives from around Aotearoa, New Zealand as we explore the rich, transforming Christian faith and what it means for our lives.

### [Thinking Matters Camp North](#)



9-12 January - Faith Bible College

Dive into dynamic presentations & discussions on some of the toughest topics young Kiwi Christians encounter. Become firmer in your faith and solid in your Christian Worldview. Leave bold in who you are and what you believe as you navigate culture AND life as a young adult.



### Summer Kids Holiday Camp

9-13 January - MiCamp Whakamaru

MiCamp kids camps are a highlight for so many children during their school holidays. During a week of holiday camp the kids get to partake in interactive chapel times, fun all-in wide games, exciting activities and eat the most delicious food.



### Family Camp - Easter Weekend

6-10 April - MiCamp Taupo

MiCamps much loved family camp is a great way for you and your family to spend the long weekend.

We offer an affordable camp designed for all ages and stages. It is not run by a church but rather run by MiCamps Board Members & Staff team. We have families who are coming for the first time and others who have been coming for many years all across the North Island.

Come enjoy family time, great speakers, fun kids program, amazing food and more!



### NZ Christian Leaders' Congress

19-21 Sept - South Auckland

An opportunity for Christian leaders from across the country to meet and confer on some key matters affecting NZ church and society. All Christian leaders are welcome. As this will be following the heads of churches (NCLANZ) meeting, we hope most

denominational leaders will be present.



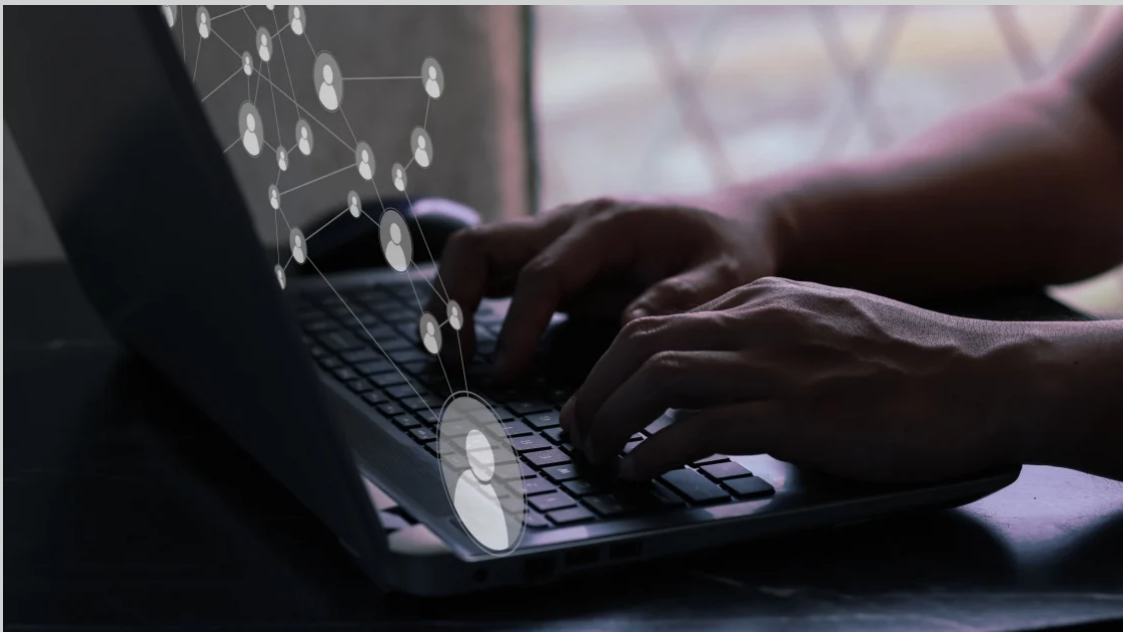
### **Sports Chaplains National Hui**

27-29 Oct – AUT Millennium, Auckland

A national gathering to encourage and equip of Sports Chaplains from around the country.

With over 100 sports chaplains now serving in 18 different sporting codes and at all levels of sport in Aotearoa NZ, it is time to gather together to share stories, be inspired, encouraged and equipped to multiply this amazing movement of pastoral care and missional work across the motu.

Would you like to have your organisation featured in our newsletter, post employment opportunities on our job board, or list events on our calendar?



You can! These are benefits we make available to Christian organisations and churches with current membership

[Click here to learn more](#)



## How often do you want to hear from us?

☐ Weekly, even if it's just notices. I like to know what's going on.

☐ Only when there is a message i.e. an editorial or article(s).

## Help spread the news...

New Zealand society is in a period of significant change, much of it away from the Christian faith and values. Christian voices in society are either ignored or scorned.

We need Christian voices which are positive, sensible, reasoned, well-informed, and clear.

Forward to a friend



### **NZ Christian Network**

PO Box 16004, Sandringham, Auckland 1351

You received this email because you signed up on our website or made a purchase from us.

[Unsubscribe](#)

[SUBSCRIBE](#)

[FORWARD](#)

[ABOUT](#)

[BECOME A MEMBER](#)

