



# GOOD FRIDAY

CHRIST HAS NOT ONLY SPOKEN TO US BY HIS LIFE BUT HAS  
ALSO SPOKEN FOR US BY HIS DEATH.



**Kia ora tātou,**

Christ Crucified and Christ Risen, and the power of God

May the fire of God come upon all who celebrate and proclaim, this weekend, Christ crucified and Christ risen. Let's not be distracted by lesser things, but instead take time to focus on the only message that can truly bring salvation. Wouldn't it be so good if there was a move on God this weekend, both in many churches and in the hearts and lives of many believers.

**Mā te Atua koutou e tiaki e manaaki i ngā wa katoa**

*May the Lord bless and keep you at all times*



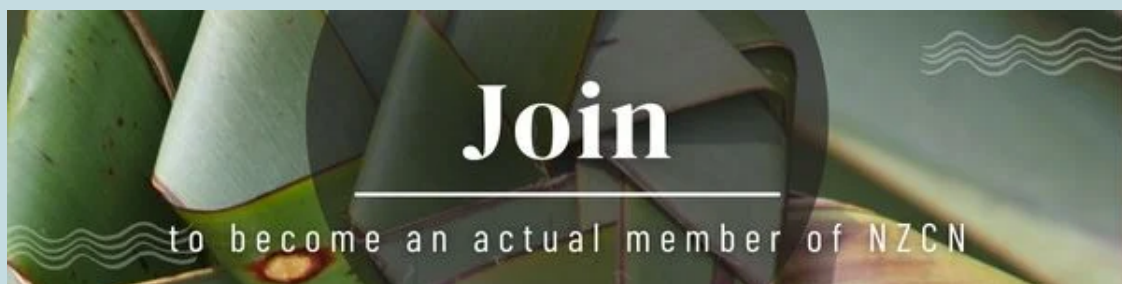
**Dr Stuart Lange**

National Director

**Gayann Phillips**

General Manager

and the NZCN team



#### **BECOME AN ACTUAL MEMBER OF NZCN**

Individuals, couples, churches, and Christian organisations may all officially join NZCN. Becoming a member carries some benefits (see [here](#)), but is primarily about making a statement that you are firmly committed to biblical Christianity and to working together with other Christians.

**Not sure if you're already a member?** [Click here](#) and if you can't log onto the site, chances are you aren't currently a member. You might have a customer account to manage purchases, but members can watch Te Rongopai online.



## [NZ Christian Leaders' Congress](#)

19-21 Sept – South Auckland

An opportunity for Christian leaders from across the country to meet and confer on some key matters affecting NZ church and society. All Christian leaders are welcome. As this will be following the heads of churches (NCLANZ) meeting, we hope most denominational leaders will be present.



Keith Harrington, lead pastor at Central Baptist Church in Invercargill, leads us in this month's regional focus on Southland.

Recently Keith initiated "16 Weeks of Soaking Prayer for Invercargill" where 16 churches, week by week, are taking responsibility for soaking the city in prayer and he will share some of the prayer points from it specifically for Southland.

Join us between 8-9pm on Monday

Last week...



# DAVE MANN



## SHINING LIGHTS TRUST



The [Hope Project](#) Easter effort is upon us, with TV and web-media connecting with half our nation's population, while the booklets connect with 1.4m homes – delivered via volunteers in most places. It's a privileged opportunity, in which we get to see our message, and testimony, being aired nationally. Let's pray for God's favour – that many will know hope.

#### PRAYER POINTS:

1. Thank God for the amazing unity, love and witness of his people nationally.
2. Pray that God's people would be enthused and equipped for their God-given mission, as witnesses, through their local churches.
3. Pray that God would work amongst our youth and youth leaders – to
  - unite,
  - then equipping all Christian youth for personal conversational witness,
  - to engage in that mission at their schools as well as through
  - youth group and combined youth activities.
4. In view of Easter – only God can draw the heart. Pray for favour upon all Christian efforts, conversations, the Hope Project booklets, TV media, various web media – and finances.

**Pray As One NZ**

Every Monday night, from 8-9pm, we run a national prayer



meeting on Zoom with 70–80 participants joining from throughout the nation. [Come join us!](#)



## Directory of members

Helping to build awareness of different parachurch organisations serving the church in New Zealand and overseas.

## Featured promotion with one of our members

Listed on our [Directory](#) by our Church and Christian Organisation members

*Happy Easter!*



**CHRISTIAN  
SAVINGS**

*Growing investments, growing churches.*

**5.75%**

p.a.

- + Fixed for a term of 18 months
- + Minimum \$1,000 deposit
- + Offer ends 30 April 2023

*Build Your Nest Egg while helping to grow His Kingdom!*

Deposits are issued by Christian Savings Limited. Term and Conditions apply.

A copy of our Product Disclosure Statement is available on our website [www.christiansavings.co.nz](http://www.christiansavings.co.nz).

You can also seek advice from a financial advice provider to help you to make an investment decision.

As Easter approaches, it is a great time to think about how you can build your 'nest egg'.

Your nest egg can be used to save up to purchase your dream home or your investment home, to cover emergency bills, to retire, or to help your children or your grandchildren.

The beautiful thing about building your 'nest egg' with Christian Savings is that you can help New Zealand churches and charities grow while you can earn some interest on your investment as well!

---

**Christian Savings** is New Zealand's leading financial institution for ethical, Christian investments and lending, enabling kiwis to be good stewards of their

finances. Christian Savings helps to grow the investments of everyday individuals, families, churches, and charities while lending to churches and Christian charities to help build and transform their ministries.

Unlike other financial institutions in New Zealand, Christian Savings not only provides interest rates benchmarked to New Zealand's largest banks but also enables New Zealanders to feel good about their finances, knowing their savings are helping grow the ministries of churches and Christian charities in Aotearoa, New Zealand.

Christian Savings

More info about investments



## Job Board / Situations Vacant

Connecting people for employment, internships, or voluntary roles in Christian organisations and churches. This can include looking for people to join governance boards or to fill a need for a specific skill/project.

## Employment Opportunities

Listed on our [Job Board](#) by our Church and Christian Organisation members

**\*Denotes a new or recently re-listed opportunity\***



### Tasman Church

Nelson Bays (*full-time*)

**\*Pastor\***



### Christian Community Churches of New Zealand

Palmerston North (*full-time*)

**\*National Administrator\***

**\*Events and Promotions Manager\***

**St Margaret's Church**

Hillsborough, Auckland (*internship, part-time*)

[Musical Worship Intern / Co-ordinator](#)



**Tertiary Students Christian Fellowship**

*all flexible as part/full-time*

[Office Administrator](#) – Wellington

[Wellington Team Leader](#) – Wellington

[Personal Assistant to the National Director](#) –  
Wellington



**Christians Against Poverty New Zealand**

Penrose, Auckland (*all full-time positions*)

[People and Culture Business Partner](#)



**Promise Keepers Trust**

Remote (*part-time*)

[Administrator](#)



**Tearfund**

Auckland

[National Church Engagement Manager](#)

– *full-time*

[Future Giving Fundraising Manager](#)

– *part-time*



**Jireh Christian School**

Avondale, Auckland

[Maintenance Person](#) – *part-time*



**Mairangi Bay Community Church**

Auckland

[Children's Ministry Coordinator](#) – *part-time*

[Senior Pastor](#) – *full-time*

**Bethlehem College**

Bethlehem, Tauranga (*full-time*)



### Head of Secondary



### **Christchurch Community Church**

Minister primarily to, and reach out to, second and third generation Asians living in NZ, and to the wider English-speaking Community

### Encounter Congregation Leader/Pastor

- full-time



### **Orama**

Great Barrier Island

### Head Chef - full-time



### **Laidlaw College**

Henderson, Auckland

### Finance Operations & Systems Manager

- full-time



### **Manna Christian Stores**

Auckland region

### 2 x Warehouse Assistants, Manukau (full-time)

### Distribution Centre Inwards Goods Controller, Manukau (full-time)

### Sales Assistant, Albany (fixed-term)

### Casual Sales Assistant, Mt Roskill (part-time)

### Sales Assistant, Mt Roskill (part-time)

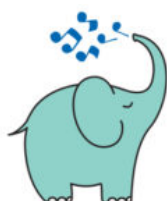


### Alpha NZ

Wellington & Otago/Southland (full/part-time)

### Regional Coach – Wellington & Surrounds

### Regional Coach – Otago & Southland



### **mainly music NZ Trust**

Auckland (part-time)

### Session Facilitator





### **Caversham Baptist**

Caversham, Dunedin (*full-time*)

[Generational Pastor](#)



### **Raumati Beach Church**

Raumati Beach, Kapiti Coast (*full-time*)

[Lead Pastor](#)



### **St Peters in the City**

Tauranga, Bay of Plenty (*full-time*)

[Ministry Assistant – Children, Youth & Families](#)



### **MiCamp Trust**

Whakamaru & Taupo (*full-time*)

[Site Manager- Whakamaru](#)

[Accounts/Office - Taupo](#)

[Lead Instructor/ Activities - Taupo](#)



### **Cross Roads Christian Community Trust (Te Nikau Addictions Centre)**

Paraparaumu (*full-time*)

[Property Maintenance / Christian Ministry](#)



### **Thinking Matters**

Tauranga (*full-time*)

[Events Coordinator](#)



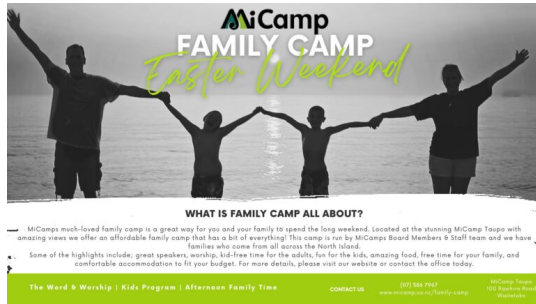
## **Event Calendar**

**Numbers in brackets indicate the number of events currently listed in that category until the *end of November*.**

Some events have both online and in person options to attend.

## **Events**

Listed on our [Calendar](#) by our Church and Christian Organisation members. In chronological order with **listings added this week highlighted.**



### **Family Camp - Easter Weekend**

6-10 April - MiCamp Taupo

MiCamps much loved family camp is a great way for you and your family to spend the long weekend.

We offer an affordable camp designed for all ages and stages.



### **NZBTI/BCNZ/Laidlaw College Centenary Celebration**

14-15 April - Henderson Campus, Auckland

Celebrating 100 years of NZBTI, BCNZ, and LAIDLAW COLLEGE



### **Thanksgiving Evening**

7pm, 15 April - Henderson, Auckland

we will be gathering to give thanks to God for the generations of his faithfulness that has unfolded through the work of NZBTI/Bible College of New Zealand/Laidlaw College.

Former students and staff, together with current students and staff, are invited to gather to celebrate the Centenary of the NZ Bible Training Institute, Bible College of New Zealand and now Laidlaw College.

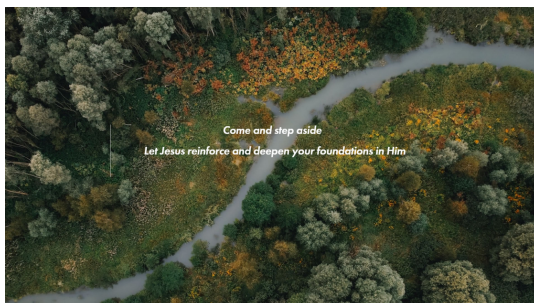
Join together to remember, honour, worship, celebrate and express in different ways our thankfulness to God for His continued faithfulness. We will also share with you some of the vision for the next season at Laidlaw and how you might look at supporting or partnering with us in that.



### **Pursuit Camp 2023**

17-19 April - Queenstown

How do we pursue Christ, and godliness, through all seasons of life? We will delve into the Biblical worldview of friendships, singleness, dating, and marriage, and explore what it looks like to pursue Christ while navigating these areas.



### **Spiritual Formation School**

24 April – 14 July, Residential Camp held at Orama, Great Barrier Island

Come and step aside – let Jesus reinforce and deepen your foundations in Him – in preparation for the rest of your life.

## **National Gatherings/Huis**

Listed on our [Calendar](#) by our Church and Christian Organisation members. In chronological order

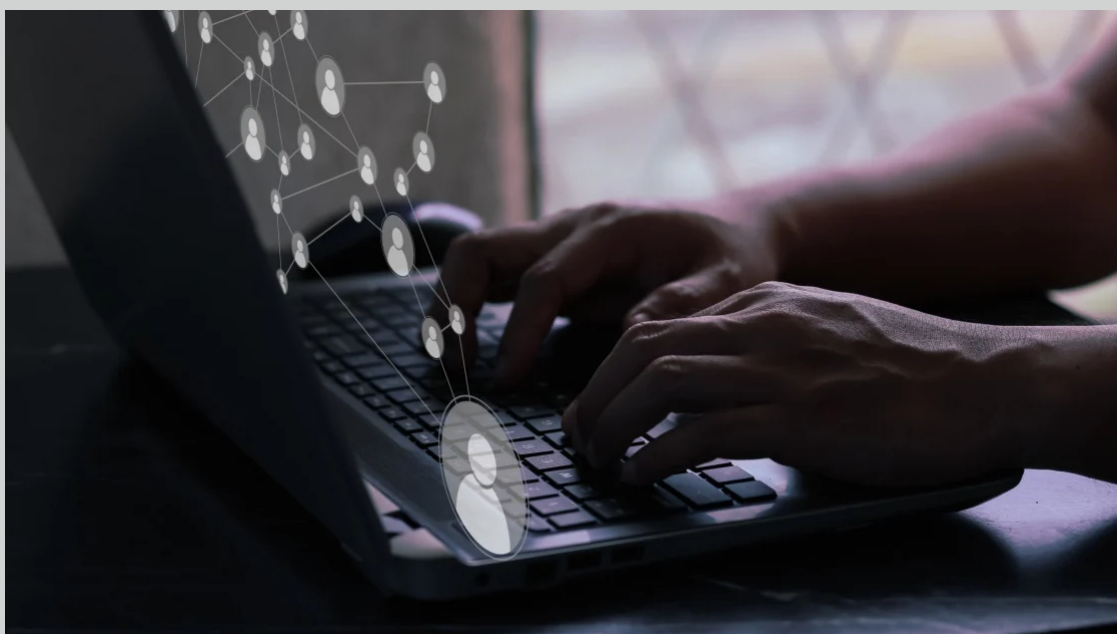


### **Sports Chaplains National Hui**

27–29 Oct – AUT Millennium, Auckland

A national gathering to encourage and equip of Sports Chaplains from around the country.

Would you like to have your organisation featured in our newsletter, post employment opportunities on our job board, or list events on our calendar?



You can! These are benefits we make available to Christian organisations and churches with current membership

[Click here to learn more](#)



## How often do you want to hear from us?

☐ Weekly, even if it's just notices. I like to know what's going on.

☐ Only when there is a message i.e. an editorial or article(s).

## Help spread the news...

New Zealand society is in a period of significant change, much of it away from the Christian faith and values. Christian voices in society are either ignored or scorned.

We need Christian voices which are positive, sensible, reasoned, well-informed, and clear.

[Forward to a friend](#)



## **NZ Christian Network**

PO Box 16004, Sandringham, Auckland 1351

You received this email because you signed up on our  
website or made a purchase from us.

[Unsubscribe](#)

**SUBSCRIBE**

**FORWARD**

**ABOUT**

**BECOME A MEMBER**