



**Kia ora tātou,**

## Great data about your church at your fingertips

How well do we feel we really know your own church? How well do we feel we know what is happening across New Zealand?

We very much encourage your local church to take part in the Church Life Survey, which happens every five years. Through this, leaderships of participating churches will receive excellent up-to-date data about their own churches. This includes your church's demographics, and your own people's involvement, beliefs, values, and attitudes. The aggregated (and anonymous) survey results also contribute to a much better understanding of the New Zealand church scene, across different generations, denominations, independent churches, regions and cities. Participating churches will easily be able to see how their own church fits into the wider picture.

The guest article below, from Ben Mai, helpfully tells us how to be part of this.

If you are in the leadership team of your church, please seriously consider taking part in the Church Life Survey. If you are not part of the leadership team, please pass this onto them.

**Mā te Atua koutou e tiaki e manaaki i ngā wa katoa**

*May the Lord bless and keep you at all times*

**Dr Stuart Lange**  
National Director

**Gayann Phillips**  
General Manager



### BECOME AN ACTUAL MEMBER OF NZCN

Individuals, couples, churches, and Christian organisations may all officially join NZCN. Becoming a member carries some benefits (see [here](#)), but is primarily about making a statement that you are firmly committed to biblical Christianity and to working together with other Christians.

**Not sure if you're already a member?** [Click here](#) and if you can't log onto the site, chances are you aren't currently a member. You might have a customer account to manage purchases, but members can watch Te Rongopai online.



### [NZ Christian Leaders' Congress](#)

19-21 Sept - Auckland

An opportunity for Christian leaders from across the country to meet and confer on some key matters affecting NZ church and society. All Christian leaders are welcome. As this will be following the heads of churches (NCLANZ) meeting, we hope most denominational leaders will be present.



BEN MAI – CHURCH LIFE SURVEY NZ

## Great data about your church at your fingertips

Do you know that in New Zealand we have a nationwide survey of church attenders? [The Church Life Survey NZ](#) (CLS) takes place every 5 years, in Census years.

*Has your church **significantly changed** since the pandemic?* The CLS is an opportunity to find out who is part of your church and what their demographic profile is.

*The **health of our people** is important – perhaps more than ever.* The CLS provides a snapshot of the spiritual health of your church.

*Leaders who grow are leaders who **seek out feedback** on their leadership.* The CLS provides feedback on your leadership and the future direction of your church.

***Benchmarking your church** against others is a healthy practice.* The CLS enables you to benchmark your results against others in your group or denomination, and against national averages

*You're contributing to a **national picture** of NZ church life.* The CLS provides meaningful information about the size & structure of the church in our nation. It's unique, we don't have other info like it.

The idea is to maximise participation within your church. The survey takes attenders 10–15 minutes to complete via smartphone, laptop or tablet, or pen & paper. A handy feature is that results are available in real time to church leaders. Both standard reports and you can build your own reports.

I believe the NZ Church would benefit from knowing more about ourselves, our church life, our faith life, our community interaction, and our opinions on the future of the Church. Good data helps inform wise decisions.

Already, many denominations, movements and churches from across NZ have signed up. It is simple to do so and at \$60 for one church, it is very well priced for what you will receive.

*Can I strongly encourage your church or denomination or movement to participate in the 2023 Church Life Survey NZ?*

Register your group / denomination / movement or church at any time [via the website](#). If you are registering as a group, do that first before you register churches within the group.

Read more

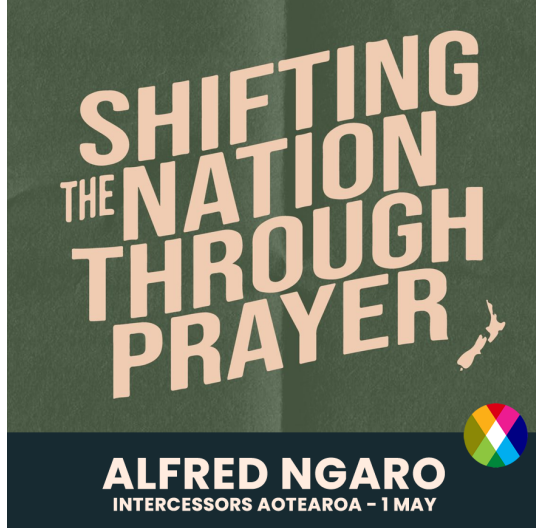


Pastor Howie Edwards, regional co-ordinator for the Northland Leaders Gatherings which brings together 70+ leaders from the region four times a year, will update us on Northland and present some of their key prayer needs.

Join us between 8-9pm on Monday

Last week...





Listen to Alfred Ngaro's interview with Di Campbell on Radio Rhema about Intercessors Aotearoa's upcoming prayer conference **"Shifting the Nation Through Prayer"**

[Listen to the interview](#)

#### PRAYER POINTS:

- Pray for the organisers and visiting speakers – especially for their safe travel.
- That God would draw the right people – particularly more church leaders
- Pray for praise & prayer to work together, hand in hand

[More information and registration](#)

**17 – 19 May, St Pauls Cathedral, Wellington | FREE EVENT**



#### Pray As One NZ

Every Monday night, from 8–9pm, we run a national prayer meeting on Zoom with 70–80 participants joining from throughout the nation. [Come join us!](#)



#### Directory of members

Helping to build awareness of different parachurch organisations serving the church in New Zealand and overseas.

# Featured promotion with one of our members

Listed on our [Directory](#) by our Church and Christian Organisation members



**Venn Foundation is an educational institution. We help people embrace the riches of Scripture and the Christian tradition for the good of their homes, workplaces, universities, churches, and communities.**

Through our Lead Programmes, Events & Courses, and Resources, we challenge people to think deeply, live faithfully, and serve wisely, to shape Aotearoa, New Zealand for the glory of God. These high-quality learning contexts are welcoming, demanding, and integrated. Participants are enabled to explore the human condition, full personhood, and the summons of the good news of Jesus Christ. We want to see people grow in wisdom and serve in areas such as business, politics, law, education, sport, media, and the arts.

We are committed to supporting the local church by helping Christians to embrace the riches of Scripture and the Christian tradition, and to contribute to the flourishing of their church communities.

Venn Foundation

Listing on NZCN



## Job Board / Situations Vacant

Connecting people for employment, internships, or voluntary roles in Christian organisations and churches. This can include looking for people to join governance boards or to fill a need for a specific skill/project.

# Employment Opportunities

Listed on our [Job Board](#) by our Church and Christian Organisation members

**\*Denotes a new or recently re-listed opportunity\***



## **Mairangi Bay Community Church**

Auckland (*full-time*)

**\*Associate Pastor\***



## **Mangapapa Union Parish**

Gisborne – Tairāwhiti (*full-time*)

**Church Leader**



## **Raumati Beach Church**

Raumati Beach, Kapiti Coast (*full-time*)

**Lead Pastor**



## **Orama**

Great Barrier Island (*part/full-time*)

**Married couple wanted – Pastoral Care/Ministry.  
Engagement/Operations Support & Guest Services  
Manager**



## **Hope Education Trust**

Mataura, Southland (*part-time*)

**Hope Oscar Supervisor**

**FreedomLife**  
Te Nikau

## **Cross Roads Christian Community Trust**

Paraparaumu (*full-time*)

**Property Maintenance / Christian Ministry**

**Christian Blind Mission Internationala NZ**



Albany, Auckland (*part-time*)

**Financial and Administration Assistant**



**Crossroads Church Mangatangi**

Pokeno (*full-time*)

**Mission Outreach Leader for Pokeno**



**Tasman Church**

Nelson Bays (*full-time*)

**Pastor**



**Christian Community Churches of New Zealand**

Palmerston North (*full-time*)

**National Administrator**

**Events and Promotions Manager**



**St Margaret's Church**

Hillsborough, Auckland (*internship, part-time*)

**Musical Worship Intern / Co-ordinator**



**Tertiary Students Christian Fellowship**

*all flexible as part/full-time*

**Office Administrator** - Wellington

**Wellington Team Leader** - Wellington

**Personal Assistant to the National Director** -

Wellington



**Christians Against Poverty New Zealand**

Penrose, Auckland (*all full-time positions*)

**People and Culture Business Partner**



**Tearfund**

Auckland

**National Church Engagement Manager**

- *full-time*

**Future Giving Fundraising Manager**

- *part-time*





### **Jireh Christian School**

Avondale, Auckland (*part-time*)

**Maintenance Person**



### **Mairangi Bay Community Church**

Auckland

**Children's Ministry Coordinator** - *part-time*

**Senior Pastor** - *full-time*



### **Bethlehem College**

Bethlehem, Tauranga (*full-time*)

**Head of Secondary**



### **Christchurch Community Church**

Minister primarily to, and reach out to, second and third generation Asians living in NZ, and to the wider English-speaking Community

**Encounter Congregation Leader/Pastor**

- *full-time*



## **Event Calendar**

**Numbers in brackets indicate the number of events currently listed in that category until the *end of November*.**

Some events have both online and in person options to attend.

## **Events**

Listed on our **Calendar** by our Church and Christian Organisation members. In chronological order with **listings added this week highlighted**.

**Till & Sow:** Kōrero exploring purposeful work for the good of our city

Our Christian faith calls us to work for the Lord, to do everything for his glory. But what does this look like on the ground, in our day-to-day working lives? What does it mean to be a



disciple of Jesus Christ in law, business, the arts, social justice, international development, and entertainment? And, is our work actually meaningful in the Kingdom of God?

We warmly invite you to this collaborative initiative between Laidlaw College, Venn Foundation, and the Auckland Church Network, where to hear from business leaders, social justice advocates, and international development experts as they share the challenges and opportunities they've faced as disciples of Jesus Christ in their work.

**A kōrero with Jessica Palmer**

25 May – Auckland

**A kōrero with Phoebe and David Atkinson**

19 June – Auckland

**NZ FORUM  
ON THE FAMILY**

**BUILDING A CANCEL COURAGE CULTURE - 2023**

**SPECIAL GUEST SPEAKER**  
Former Australian Deputy Prime Minister John Anderson

**GALA CELEBRATION DINNER**  
Thursday 29th June 6.30pm – 9pm

Support the work of Family First and meet our international conference speakers over a sumptuous 3-course banquet dinner

**\$129 PER HEAD**

Due Drop Events Centre (formerly Vodafone Events Centre) AUCKLAND

**Friday 30 June**

**The theme of this year's Forum on Friday 30 June is "Building a Courage Culture" – not a 'cancel culture', and we have an amazing line-up of speaker on key social issues, including Lila Rose (USA), Walt Heyer (USA), Dr Kevin Sabet (USA), Deb Acason (Australia) and John Steenhof (Australia). Last year sold out... Register now!**

As a special bonus, we're hosting our very first gala celebration dinner with special guest speaker, the former deputy PM of Australia John Anderson, who will be challenging us to push back against the forces of wokeness. This will be held on the Thursday night (29th) before the all-day conference. *Limited spaces*

## MORE INFO



### Mid Winter Kids Camp

3-7 July – Taupo

MiCamp kids camps are a highlight for so many children during their school holidays. During a week of holiday camp the kids get to partake in interactive chapel times, fun all-in wide games, exciting activities and eat the most delicious food.



### OAC Evangelist Fellowship Conference

21-24 August – Waikanae Beach

UNDERSTANDING WORLD VIEWS

Guilt? Shame? Power?

We all see the world differently so how do we reach those we don't understand?

Come for a time of learning together, fellowship and outreach.

## National Gatherings/Huis

Listed on our [Calendar](#) by our Church and Christian Organisation members. In chronological order

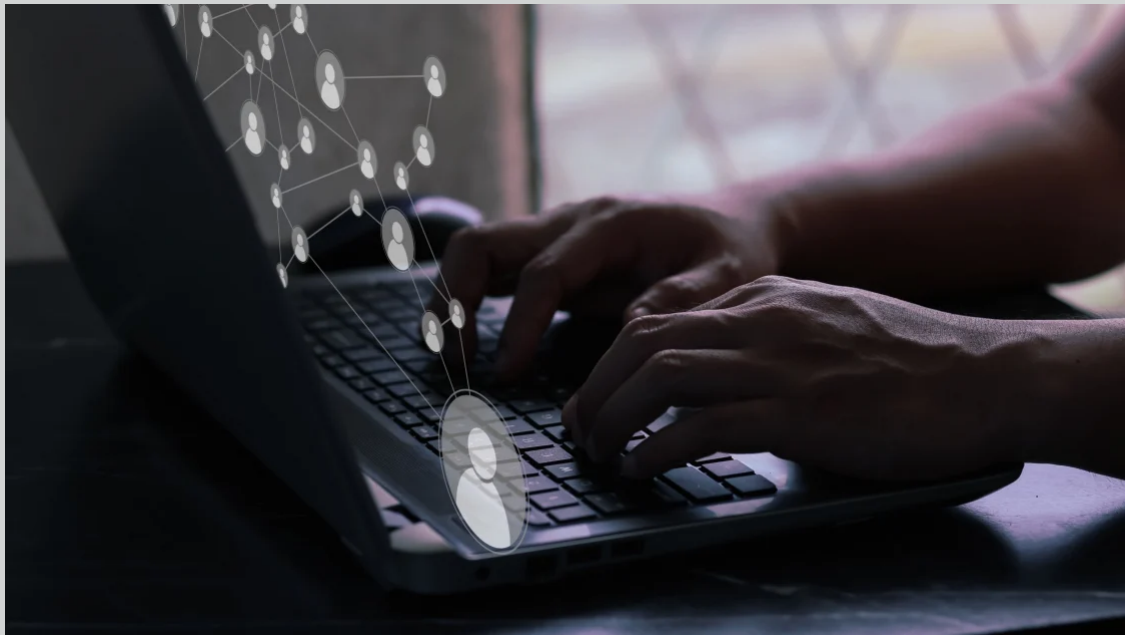


### Sports Chaplains National Hui

27-29 Oct – AUT Millennium, Auckland

A national gathering to encourage and equip of Sports Chaplains from around the country.

Would you like to have your organisation featured in our newsletter, post employment opportunities on our job board, or list events on our calendar?



You can! These are benefits we make available to Christian organisations and churches with current membership

[Click here to learn more](#)



How often do you want to hear from us?

☐ Weekly, even if it's just notices. I like to know what's going on.

☐ Only when there is a message i.e. an editorial or article(s).



# Help spread the news...

New Zealand society is in a period of significant change, much of it away from the Christian faith and values. Christian voices in society are either ignored or scorned.

We need Christian voices which are positive, sensible, reasoned, well-informed, and clear.

Forward to a friend



## **NZ Christian Network**

PO Box 16004, Sandringham, Auckland 1351

You received this email because you signed up on our website or made a purchase from us.

[Unsubscribe](#)

[SUBSCRIBE](#)

[FORWARD](#)

[ABOUT](#)

[BECOME A MEMBER](#)