

[SUBSCRIBE](#)

[FORWARD](#)

[ABOUT](#)

[BECOME A MEMBER](#)



Kia ora tātou,

The unending horror and scandal of sexual abuse in church-related contexts

Sexual abuse has happened, and still happens, in a vast range of contexts, all around the world. It happens in families, neighbourhoods, schools, institutions, workplaces, clubs, sports, in armed forces, and in wars.

Sexual abuse reflects not just lustfulness, but also our dark human capacities for selfishness, delusion, exploitation, domination, violence, and deceit. It is a glaring manifestation of our human sinfulness.

Sexual abuse is never innocent or justifiable or right. And it almost always leaves an enduring legacy of great harm.

It is utterly tragic that considerable sexual abuse has clearly taken place in some Christian churches, church-going families, and church-run institutions such as boarding schools and orphanages. Sexual abuse is always 100% wrong. But for it to happen in church-related contexts is doubly appalling and shameful, because it goes against everything Christian faith stands for, including God's calls to love, mercy, holiness of heart and mind, integrity, and renewal in Christ.

The scandalous and inexcusable failings of some continue to bring huge reputational harm upon the church at large.

What can we do about all this? Deplore what has happened. Empathise with and pray for those who have been victims. Be compassionate. Support justice.

Be vigilant. Ensure our churches have very robust systems, to help protect everyone from harm. Disciple our people well. And be determined to follow Christ in love, integrity, and purity.

Mā te Atua koutou e tiaki e manaaki i ngā wa katoa

May the Lord bless and keep you at all times



Dr Stuart Lange

National Director



Gayann Phillips

General Manager

and the NZCN team



NZ Christian Leaders' Congress

19–21 September in Avondale, Auckland

This is an opportunity for Christian leaders from across the country to meet and confer on some key matters affecting NZ church and society.

All Christian leaders are welcome

Registration fees:

- Non-members \$250 per person
- Members \$200 per person
- Full-time students and those aged 30 and under \$150

Not a member? See the box below for more information about membership.

Congress updates

Non-members,
students, 30 & under

Registration for
MEMBERS

BECOME AN ACTUAL MEMBER OF NZCN

Individuals, couples, churches, and Christian organisations may all officially join NZCN. Becoming a member carries some benefits (see [here](#)), but is primarily about making a statement that you are firmly committed to biblical Christianity and to working together with other Christians.

Not sure if you're already a member? [Click here](#) and if you can't log onto the site, chances are you aren't *currently* a member. You might have a customer account to manage purchases, but members can watch Te Rongopai online. Contact us if you aren't sure or need help logging in.

Current membership rates:

- \$30 p.a. for individuals
- \$50 p.a. for married couples
- \$100 p.a. for Christian organisations
- \$100 p.a. for congregations
- \$250 p.a. for denominations



How often do you want to hear from us?

☐ Weekly, even if it's just notices. I like to know what's going on.

☐ Only when there is a message i.e. an editorial or article(s).

Pray as One NZ

Under the umbrella of NZ Christian Network



Joining us from West Coast are Tim Mora (Grey District) and Sam Blight (Westland District), who will share current stories and prayer needs for the region.

Join us between 8-9pm on Monday



Pray As One NZ

Every Monday night, from 8-9pm, we run a national prayer meeting on Zoom with 70-80 participants joining from throughout the nation. [Come join us!](#)

Forward

this email to others



Directory of members

Helping to build awareness of different parachurch organisations serving the church in New Zealand and overseas.



Job Board / Situations Vacant

Connecting people for employment, internships, or voluntary roles in Christian organisations and churches. This can include looking for people to join governance boards or to fill a need for a specific skill/project.

Employment Opportunities

Listed on our [Job Board](#) by our Church and Christian Organisation members

Denotes a new or recently re-listed opportunity



KingsWay School

Auckland (*full-time*)

Middle School Teacher

Assistant Head of Primary to start T1 2024

Year 10 Social Studies Teacher



MiCamp

Lake Taupo (*full-time*)

Camp Manager / Director



Tertiary Students Christian Fellowship

Wellington (*part to full-time*)

Personal Assistant to the National Director

Wellington Team Leader

Staff Workers Dunedin, Wellington, Auckland & nation-wide (*part & full-time options available*)



Christian Community Churches of New Zealand (*full-time*)

National Youth & Young Adult Enabler Anywhere

Regional Enabler: Lower North Island Anywhere

National Administrator Palmerston North

Events & Promotions Manager Palmerston North



Bible Society New Zealand

Auckland (*full-time*)

Graphic Design and Marketing Coordinator

Eden Community Church



Auckland (*full-time*)

[Lead Pastor](#)



Christchurch Community Church

Minister primarily to, and reach out to, second and third generation Asians living in NZ, and to the wider English-speaking Community

[Encounter Congregation Leader/Pastor](#) – *full-time*



Alpha NZ

Auckland (*part-time*)

[Events Lead](#)



Elevate Christian Disability Trust

Onehunga, Auckland (*part-time*)

[Office Administrator](#)



Mataura Christian Church

Mataura (*full/part-time*)

[Family Support Worker](#)



Mangapapa Union Parish

Gisborne – Tairāwhiti (*full-time*)

[Church Leader Minister/Pastor](#)



Replenish Respite and Healing Trust

Okuku, North Canterbury (*full-time*)

[Retreat Centre Hosts – Residential](#)



Baptist Churches of New Zealand

Penrose, Auckland (*part-time*)

[Finance Coordinator](#)

[Administration Coordinator](#)



Rhema Media Inc

Auckland CBD (*full-time*)

[Media Sales – New Business Development](#)



Numbers in brackets indicate the number of events currently listed in that category until the *end of November*.
Some events have both online and in person options to attend.



Open until all positions are filled for Nov '23 to June '24 intake

Applications are now open for the Venn Residential Fellowship 2023/24

The Residential Fellowship is an eight-month full-time study programme for people who desire a deeper understanding of God, the world, and themselves, and who want to serve and lead in their communities with vibrant faith and wisdom. Guided by a world-class team, this is a unique and rich context for Christian formation.

[See here for more details](#)



Now until midnight 12am 24 August

Applications are now open for the Maxim 2023 Summer Internship!

The Maxim Internship is a 12-week summer programme for university students and recent graduates with an interest in Policy, Politics and Communications.

[See here for more details](#)

Events

Listed on our [Calendar](#) by our Church and Christian Organisation members

Friday 7– 9:30pm & 9am–5:30pm Saturday!

THINKING MATTERS Conference 23 - DNDN

Defend Faith. Navigate Culture. Reach People.



Dan Paterson

GET SOLID ANSWERS TO TOUGH
QUESTIONS ABOUT CHRISTIANITY

FOUNDER AND CEO | QUESTIONING
CHRISTIANITY | BRISBANE,
AUSTRALIA

DUNEDIN 28-29 July | TAURANGA 11-12 Aug | AUCKLAND 18-19 Aug

DUNEDIN

TAURANGA

AUCKLAND



GOVERNANCE

WHAT IS FRUITFUL STEWARDSHIP?

SPEAKERS



REV. FRANCIS
(FRANK) RITCHIE
Lead Chaplain
Media Chaplaincy NZ



VEN. DR. LYNDON
DRAKE
Archdeacon of
Tāmaki Makaurau



HOSTS
CHRIS
CLARKE
CEO
Wilberforce



KIRSTEN (KP)
PATTERSON
Chief Executive
Institute of Directors



JENNY
COLLINGS
National Director
Christian Medical
Fellowship of NZ



DAN
MAZENGARB
CEO
Christian Savings



STEVEN
MOE
Partner
Parry Field Lawyers

CHRISTCHURCH
AUG
30
WED

AUCKLAND
SEP
06
WED

WELLINGTON
SEP
13
WED



Event website

Register now!

Maxim Institute | Sir John Graham
Lecture 2023

15 September – Auckland CBD



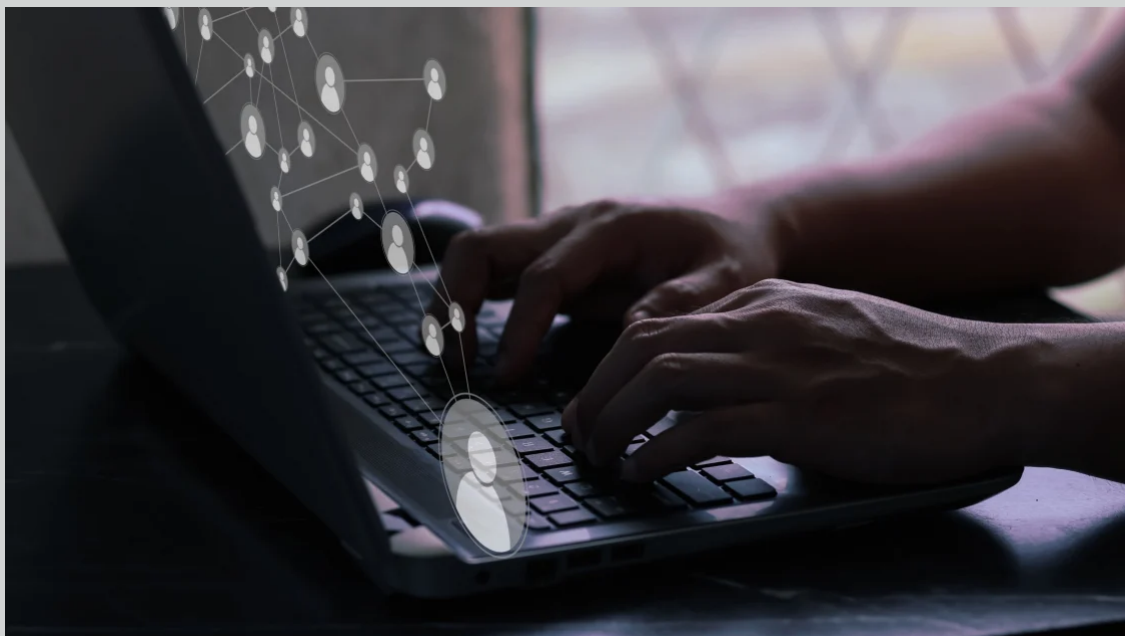
REBUILDING TRUST | POPULISTS, ELITISTS,
AND THE FUTURE OF OUR DEMOCRACY

Trust has declined steadily in the developed world over some decades; more sharply in recent years.

The great economic and socially liberal consensus of post-WW2 governments has shattered, exposing a political climate that is increasingly fevered and volatile.

Over a banquet dinner, in the 2023 Sir John Graham Lecture, Associate Professor Tom Simpson will explore whether our future is one of increasing polarisation, or whether a new consensus can be forged, with trust at its core.

Would you like to have your organisation featured in our newsletter, post employment opportunities on our job board, or list events on our calendar?



You can! These are benefits we make available to Christian organisations and churches with current membership

[Click here to learn more](#)



Help spread the news...

New Zealand society is in a period of significant change, much of it away from the Christian faith and values. Christian voices in society are either ignored or scorned.

We need Christian voices which are positive, sensible, reasoned, well-informed, and clear.

Forward to a friend



NZ Christian Network

PO Box 16004, Sandringham, Auckland 1351

You received this email because you signed up on our website or made a purchase from us.

[Unsubscribe](#)