

SUBSCRIBE

FORWARD

ABOUT

BECOME A MEMBER



**Kia ora tatou,**

## How should Christians vote?

It is not for us to say who or what anyone should vote for. That is 100% each voter's own call. We can say, though, that it is really important to vote, and that in a democracy voting is both our right and our responsibility.

No doubt all political candidates and parties want to serve society and to help make New Zealand a better place. But the challenge for us as voters is that politicians greatly vary in their beliefs, ideologies, values, priorities, and policies (and also their obsessions and blind spots). We need to be as discerning as we possibly can about what politicians and parties really stand for, and what they may go along with.

Three crucial areas to consider – in no particular order – are ethics, the economy, and the environment. These categories don't cover everything, but they should all be important for Christian voters...

- Ethics: this applies to a very wide range of issues including laws and policies in relation to marriage, sexuality, gender, sex education, abortion, euthanasia, drugs, freedoms of belief and expression, fair wages, a just tax system, and inter-cultural respect and harmony.
- The economy: sound economic management is always helpful, especially if it enables good public services (e.g. in health and education), lowers the cost of living, facilitates affordable housing for all, and helps everyone in society on an equitable basis.

- The environment: taking better care of God's creation is God-honouring, and the deepening climate change makes it increasingly urgent.

The problem for voters is that no political party ticks all these boxes. All parties have strengths in some areas, but deficiencies in others.

In recent years, with the support of a majority of MPs from across both left and right, Parliament has passed a flood of radical social legislation, some of it deeply wrong and abhorrent. At the same time, little has been done to address the widening socio-economic disparities in New Zealand, or the worsening climate crisis – and in neither area is it clear how much real action is now on offer.

We urge Christian people to vote both carefully and prayerfully, seeking to discern what policies align best with biblical truth and righteousness, and which politicians and parties may best serve this country's overall wellbeing.

Readers may find the following resources helpful...

Rasik Ranchord:

- [VOTE Smart 2023](#)
- [God, Gospel & Government](#)

Family First:

- [Value Your Vote](#)

Dave Mann:

- [Your Nation. Your Voice. Democracy.](#)

Finally, do be in prayer that God may bring about some good outcomes in this election, and that among those gaining a place in the next Parliament may be many faithful and capable Christians.

**Mā te Atua koutou e tiaki e manaaki i ngā wa katoa**

*May the Lord bless and keep you at all times*



**Dr Stuart Lange**

National Director



**Gayann Phillips**

General Manager

and the NZCN team

How often do you want to hear from us?

☐☐

Weekly, even if it's just notices. I like to know what's going on.

Only when there is a message i.e. an editorial or article(s).



## Directory of members

Helping to build awareness of different parachurch organisations serving the church in New Zealand and overseas.



This Monday's regional focus is on the region of Auckland and we have invited some of the team that is putting together this year's [Auckland Prayer Breakfast](#) and inaugural [Auckland Prayer Festival](#) to share about new prayer initiatives for Tāmaki Makaurau / Auckland.

See notice below for more details about these events!

Join us between 8-9pm on Monday

Last week



Last week, we watched this video from the recent NZ Christian Leader's Congress of the key issues facing the church in Aotearoa / New Zealand as seen by 18 different leaders from across the nation. This snapshot session is only 22 minutes long but says so much.

The issues identified are listed in the video description to help guide your prayers.

[Watch other videos from Congress](#)

## Featured upcoming events



We're excited to invite you to the **2023 Auckland Prayer Breakfast** on



Thursday 9th November.

This is happening at Eden Park; doors open at 6:30am, mihi at 6:55am, and breakfast will be served at 8:20am.

The Auckland Prayer Breakfast gathers church, NGO, mission, business, and other Christian leaders from across the city every year.

Early bird until Wed 18 Oct\*

Jesus says in **John 10:10** that he came *"that they may have life and have it abundantly"*, and we want to seek the Father's blessing over our city.

Our guest speaker is ImpactLab CEO and 2021 Xero Hi-Tech Young Achiever **Maria English**.

We will pray for flourishing and LIFE in Homes & Neighbourhoods, Workplace & Education, Government & Society.

Don't miss this special gathering of fellowship, prayer, networking, worship, and of course an excellent breakfast.

See our [website](#) for more details, FAQs and to grab your Early Bird tickets for you and your teams. \*\$45 per person, \$400 for 10 & \$480 for 12 until Wed 18 October.

For the first time ever, we are wrapping an entire Prayer Festival around the Breakfast.

We want to champion, celebrate and encourage all kinds of prayer across our city! Head to the Prayer Festival website to find out more, and to find out how to get involved.

Auckland Prayer Festival



# Faith and Belief

Exploring the spiritual landscape  
in Aotearoa New Zealand

Join us to hear the results of the 2023  
Faith and Belief Study and the Church  
Life Survey.

Auckland: Wednesday 8th November,  
Novotel Ellerslie

Wellington: Monday 13th November,  
Victoria University

Dunedin: Tuesday 14th November,  
Otago University

Christchurch: Wednesday 15th November,  
La Vida Centre



Register  
Here



Nau mai, haere mai!

## 2023 Faith & Belief Study

We all know the importance of better understanding the spiritual landscape of our nation, how Christians are seen in our society, and our life as Christian communities. We are delighted, therefore, to be launching the findings from two key pieces of research, and we pray that they will serve Christian leaders and communities across Aotearoa New Zealand.

The 2023 Faith and Belief study is a national study of faith and spirituality in Aotearoa New Zealand. This research explores the hopes, fears, and longings of people living in this nation, how they engage with spirituality and religious faith, and our society's current perceptions of Christianity, Jesus, and the church. The study, commissioned by the Wilberforce Foundation and undertaken by the independent research firm McCrindle, involved a nationally representative survey as well as focus group discussions to better understand the key insights that emerged through the survey. The 2023 study builds on the inaugural study undertaken in 2018.

The Church Life Survey is a long-standing, nationwide survey of church attendees in Aotearoa New Zealand. It explores the life of the church across the country, offering insights for congregations and denominations into demographics, church life, faith, community, and leadership. The 2023 survey commenced in May. The 2023 Church Life Survey NZ is administered by the Christian Research Association of NZ, in partnership with the Wilberforce Foundation and Auckland Church Network.

We will be launching the findings of both studies together, at a series of events in November. Our hope is the two studies are seen as speaking to one another, and that the insights of each will spark conversations that will bear fruit in the years ahead.

The events will involve presentations of the key data from both pieces of research, as well as panel discussions and opportunities to explore with others the implications of the studies.

Each event starts at 9.15 am (with tea and coffee available from 8.45 am), and the events will conclude at 12.30 pm.

**Auckland:**

Wednesday 8th November, Novotel Ellerslie

**Wellington:**

Monday 13th November, Victoria University

**Dunedin:**

Tuesday 14th November, Otago University

**Christchurch:**

Wednesday 15th November, La Vida Centre

Ngā manaakitanga – blessings

**Chris Clarke, CEO**

The Wilberforce Foundation

Details and registrations



## Job Board / Situations Vacant

Connecting people for employment, internships, or voluntary roles in Christian organisations and churches. This can include looking for people to join governance boards or to fill a need for a specific skill/project.

Listed on our [Job Board](#) by our Church and Christian Organisation members

**\* Denotes a new or recently re-listed opportunity \***

**tearfund**

**Tearfund**

Auckland

**\*PA to the Marketing & Fundraising Director\*** (part-time)

**\* Church Engagement Manager \*** (full-time)

**Fundraising Coordinator** (full-time)



**Alpha NZ**

Auckland (full / part-time)

**\* Events & Administration Coordinator \***

**Pacific Academy for Xcellence**

Auckland (part-time)



**\* Volunteer outreach worker \***



**Christian Community Churches of New Zealand**  
(full-time)

**National Youth & Young Adult Enabler** Anywhere

**Regional Enabler: Lower North Island** Anywhere

**National Administrator** Palmerston North

**Events & Promotions Manager** Palmerston North



**Tertiary Students Christian Fellowship**

Wellington (part to full-time)

**Wellington Team Leader**

**Staff Workers** Dunedin, Wellington, Auckland &  
nation-wide (part & full-time options available)



**Holy Trinity Tauranga**

Tauranga (part-time)

**Accounts Administrator**



**KingsWay School**

Silverdale, Auckland (full-time)

**Social Studies Teacher (x2)**

**Assistant Head of Primary**

to start T1 2024

**Primary School Teacher**



**Manna Christian Stores**

Auckland

**Casual Sales Assistant** Mt Roskill Temporary

**2 x Casual Warehouse Assistants**

Wiri Temporary

**Distribution Centre Assistant Team Lead**

Wiri full-time



**Rivergum Christian College**

Glossop, South Australia, Australia (full-time)

**Primary & Secondary Teacher**

**Baptist Student Hostel**



Palmerston North (*full-time*)

**[\\*Baptist Student Hostel Managers\\*](#)**



**Christchurch Community Church**

Christchurch (*full-time*)

**[Pastor – 2nd Generation Asian Congregation](#)**



**International Baptist Church of Sofia**

Sofia, Bulgaria (*full-time*)

**[Pastor of International Baptist Church](#)**



**European Christian Mission New Zealand**

Flexible location (*full-time*)

**[Intercultural Internships](#)**



**The Runway Foundation**

Pukekohe, Auckland (*full/part-time*)

**[ADDventurers Kids Club Facilitator & Youth Support](#)**

**OpenDoors®**

**Open Doors New Zealand**

Remote (*full-time*)

**[Relationship Manager](#)**



**Elevate Christian Disability Trust**

Onehunga, Auckland (*part-time*)

**[Grant Writer](#)**



## Event Calendar

Listings by our Church and Christian Organisation members

**[Please contact event organisers for additional information](#)**



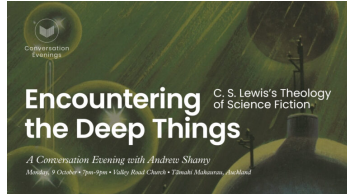
Open until all positions are filled for Nov '23 to June '24 intake

## Applications are now open for the Venn Residential Fellowship 2023/24

The Residential Fellowship is an eight-month full-time study programme for people who desire a

deeper understanding of God, the world, and themselves, and who want to serve and lead in their communities with vibrant faith and wisdom. Guided by a world-class team, this is a unique and rich context for Christian formation.

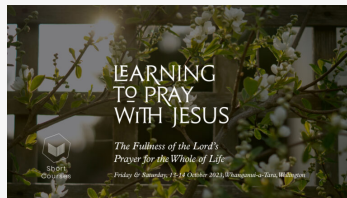
[See here for more details](#)



### A Conversation Evening with VENN

## C. S. Lewis's Theology of Science Fiction

**9 Oct | Auckland**



### VENN – Short Course

## Learning to Pray with Jesus

**13 Oct | Auckland**



### Thinking Matters – Spring Apologetics Camp

## Endure

Aimed at late teens and young adults ages 15–22, we will take on some of the most challenging worldview and apologetics topics our day!

**20–23 Oct | Waihola**



### Laidlaw CfCL Leaders Day

The story of Te Rongopai (the Gospel) in Aotearoa is full of amazing hope, despite its brokenness

**Laidlaw Centre for Church Leadership invites you to join us for this one-day conference dedicated to exploring what it could mean to do 'mission' differently in New Zealand.** Gain fresh insights into the intricate tapestry of Te Rongopai (the Gospel) – moving beyond identity politics, and discovering the power of whakapapa – while finding our place in God's story.

**Auckland 24 Oct**

**Wellington 25 Oct**

**Christchurch 26 Oct**



## Sports Chaplaincy

### Sports Chaplains National Hui

A national gathering to encourage and equip of Sports Chaplains from around the country.

**27-28 Oct | Auckland**



## Laidlaw Sturt Lectures

### The Trauma Informed Church

**1 December | Auckland**

**Trauma is experienced in many different forms and has a profound impact on all aspects of well-being for individuals, whānau, and communities.**

Creating safe environments is recognised as a key contributor to well-being for those living in the aftermath of trauma. Christ has called his Church to be light in this world, and this compels us to ensure our communities are safe spaces to openly discuss and address trauma.



## VENN

### Summer Conference

A week of learning, conversation, good food, and fun, you too can come to see the truth, beauty, and challenge of the Christian life for 18-30 years old.

**5-12 January | Waikato**



## Thinking Matters Camp South 2024

### Made New

Aimed at late teens and young adults ages 15-20, we will take on some of the most challenging worldview and apologetics topics our day.

**22-26 Jan | Waihola**



## Thinking Matters Camp North 2024

### Made New

Aimed at late teens and young adults ages 15-20, we will take on some of the most challenging

worldview and apologetics topics our day.

**29 Jan to 2 Feb | Papamoa**



## Venn Vocational Programme

For people in their late 20s to late 40s, who want to get better at navigating life's challenges, questions, and opportunities.

**Christchurch 9 Feb**



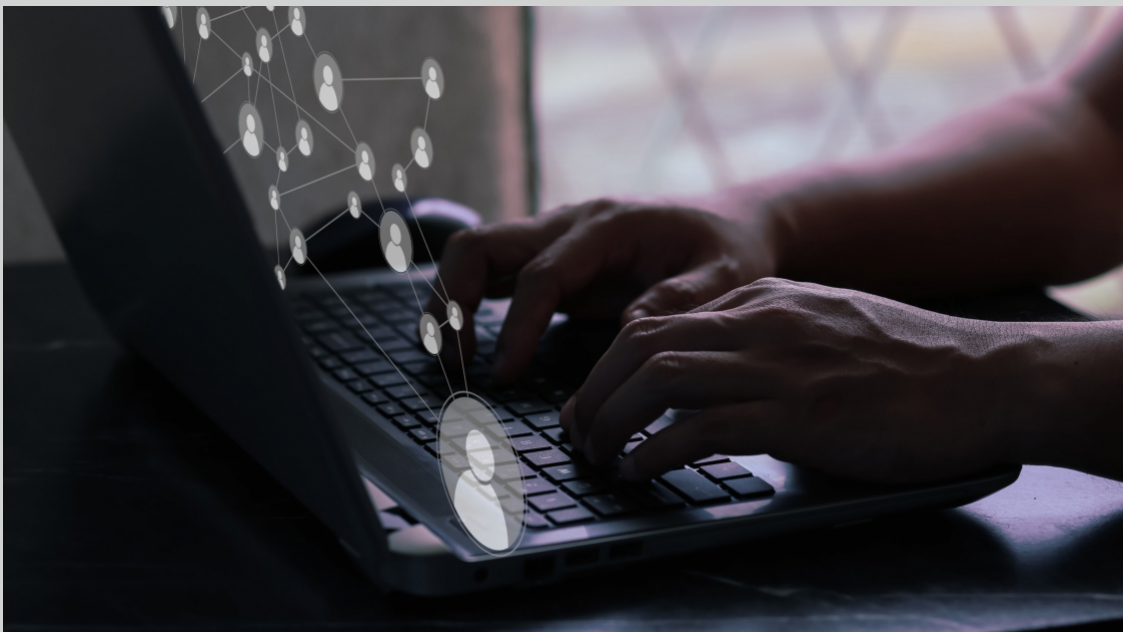
## Partners in Ministry

### Carey Nieuwhof Leadership Tour

Learn from a world class leadership expert and connect with like-minded leaders. Whether you are in business, not for profit, or church leadership, you will leave inspired and equipped to lead and reach your community in a healthy and sustainable way.

**19 Feb | Auckland**

Would you like to have your organisation featured in our newsletter, post employment opportunities on our job board, or list events on our calendar?



You can! These are benefits we make available to Christian organisations and churches with current membership

[Click here to learn more](#)



## Help spread the news...

New Zealand society is in a period of significant change, much of it away from the Christian faith and values. Christian voices in society are either ignored or scorned.

We need Christian voices which are positive, sensible, reasoned, well-informed, and clear.

[Forward to a friend](#)

### **NZ Christian Network**

PO Box 16004  
Sandringham  
Auckland 1351

Please consider updating your email subscriptions with us to reduce the number or frequency of emails you receive rather than completely unsubscribing.

[Update your subscriptions or unsubscribe](#)